

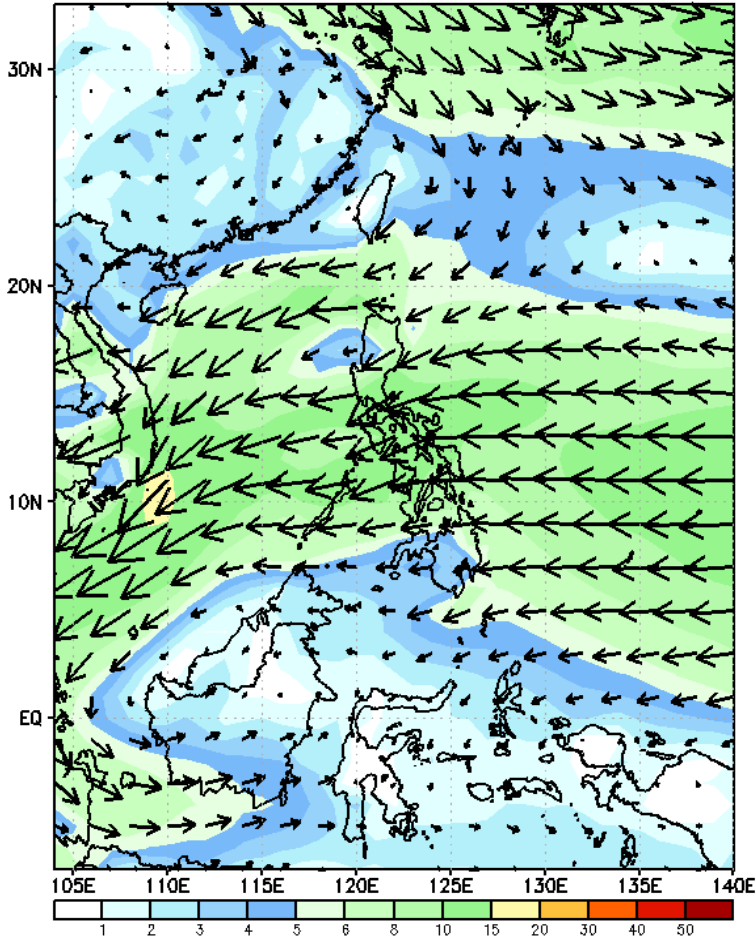
Week 1 & Week 2 Forecast for the Philippines using GEFS Model



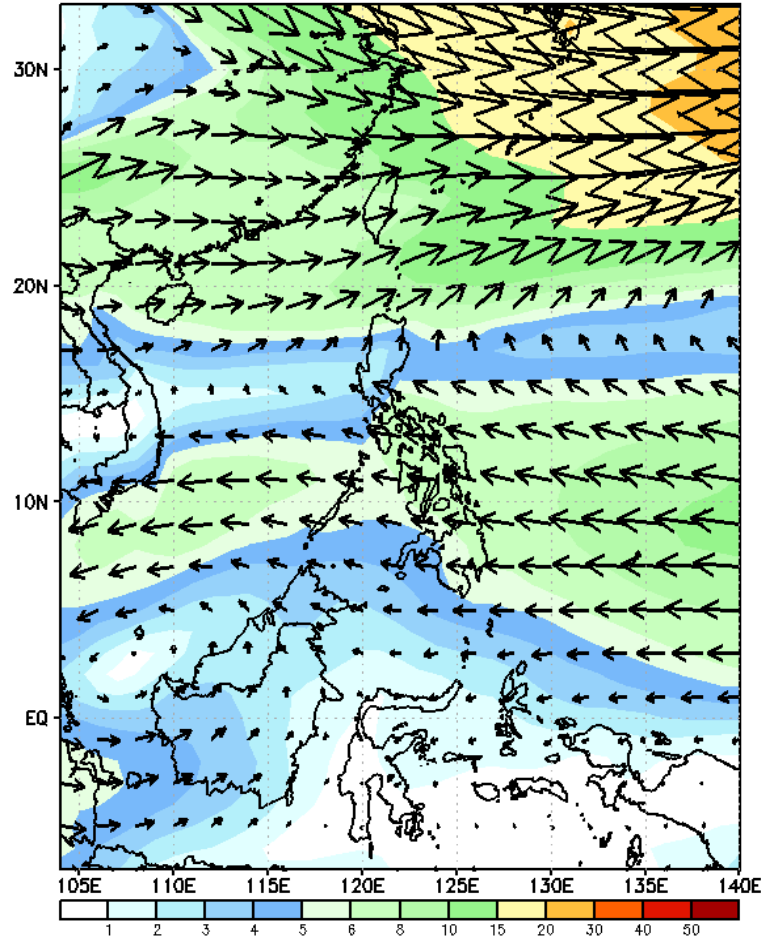
GEFS Week-1 Wind Forecasts:

Week 1: Jan 08-14, 2024

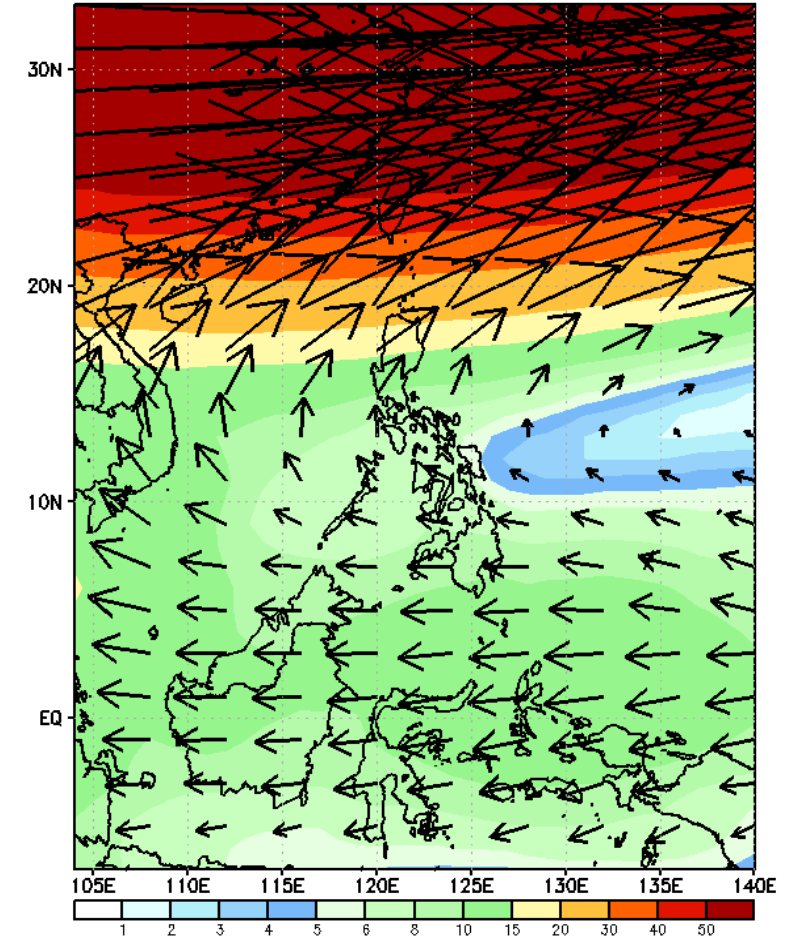
GEFS Week-1 850-hPa Wind Total
Valid: 20250108 - 20250114



GEFS Week-1 700-hPa Wind Total
Valid: 20250108 - 20250114

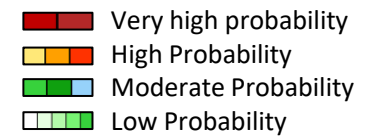


GEFS Week-1 200-hPa Wind Total
Valid: 20250108 - 20250114



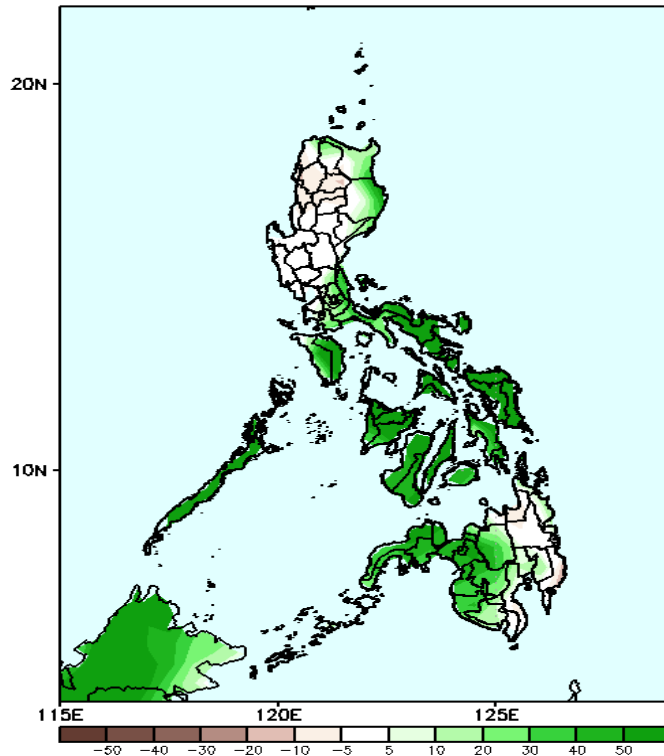
Northeast Monsoon affecting Northern Luzon while Easterlies affecting the rest of the country during the forecast period

Precipitation Anomaly and Exceedance Probability > 25/50 mm



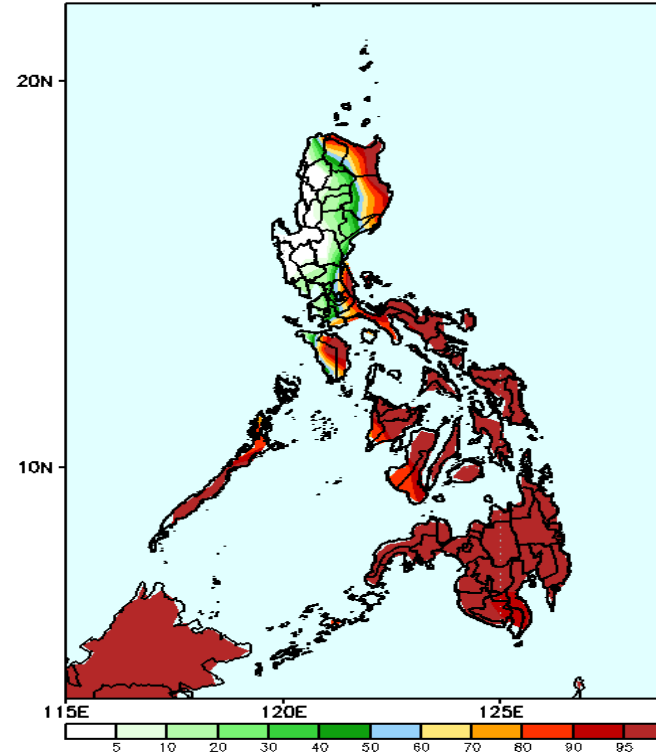
Week 1: Jan 08-14, 2024

GEFS Week-1 Precip Anomaly
Valid: 20250108 - 20250114



Increase of Rainfall of 20-60mm is expected in most parts of Eastern and Southern Luzon and Western and Central Mindanao; 40-100mm in Visayas.

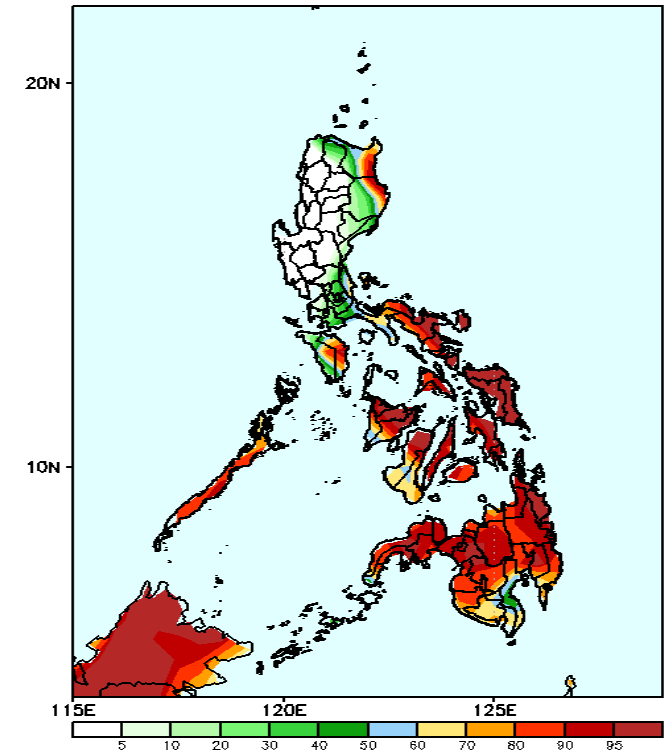
GEFS Week-1 Exceedance Prob. > 25mm
Valid: 20250108 - 20250114



Probability to Exceed 25mm

- High to very high over Batanes, eastern section of Cagayan and Isabela, Quezon, Bicol Region, most of MIMAROPA, Visayas and Mindanao;
- Moderate to high over Payao, the rest of Cagayan and Isabela, Rizal and Batangas;
- Low to Moderate over the rest of Luzon.

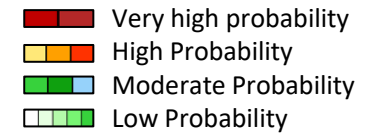
GEFS Week-1 Exceedance Prob. > 50mm
Valid: 20250108 - 20250114



Probability to Exceed 50mm

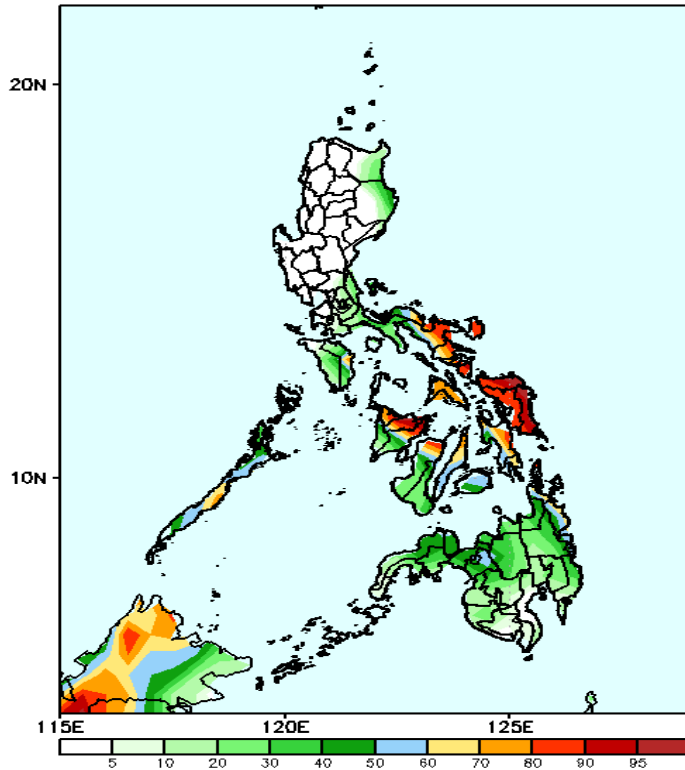
- High to very high over Bicol Region, Palawan, northern part of Panay Island, Eastern Visayas, and most of Mindanao;
- Moderate to high over Batanes, the eastern part of Cagayan and Isabela, Aurora, the rest of southern Luzon, the rest of Visayas, and the southern part of Mindanao;
- Low to moderate over the rest of Luzon.

Exceedance Probability > 100/150/200 mm



Week 1: Jan 08-14, 2024

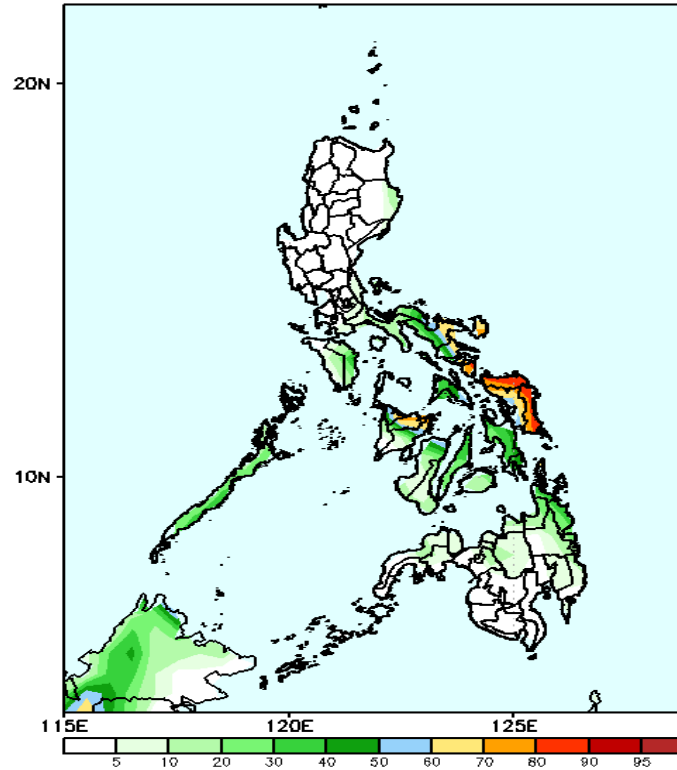
GEFS Week-1 Exceedance Prob. > 100mm
Valid: 20250108 - 20250114



Probability to Exceed 100mm

- High to very high over most of Bicol Region, Palawan, Capiz, Aklan, Northern Iloilo, and Samar Provinces;
- Moderate to high over Quezon, the rest of Visayas, and the northern part of Mindanao;
- Low over the rest of Luzon.

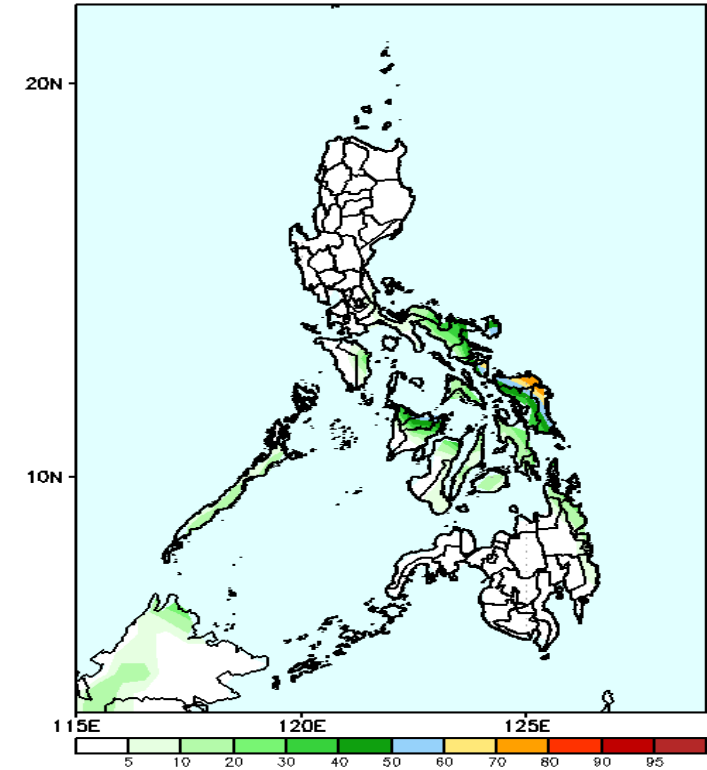
GEFS Week-1 Exceedance Prob. > 150mm
Valid: 20250108 - 20250114



Probability to Exceed 150mm

- Moderate to high over most of Bicol Region, Aklan, Capiz, and Samar Provinces;
- Low to moderate over the rest of Southern Luzon, Dinagat Island, and the rest of Visayas;
- Low over the rest of the country.

GEFS Week-1 Exceedance Prob. > 200mm
Valid: 20250108 - 20250114



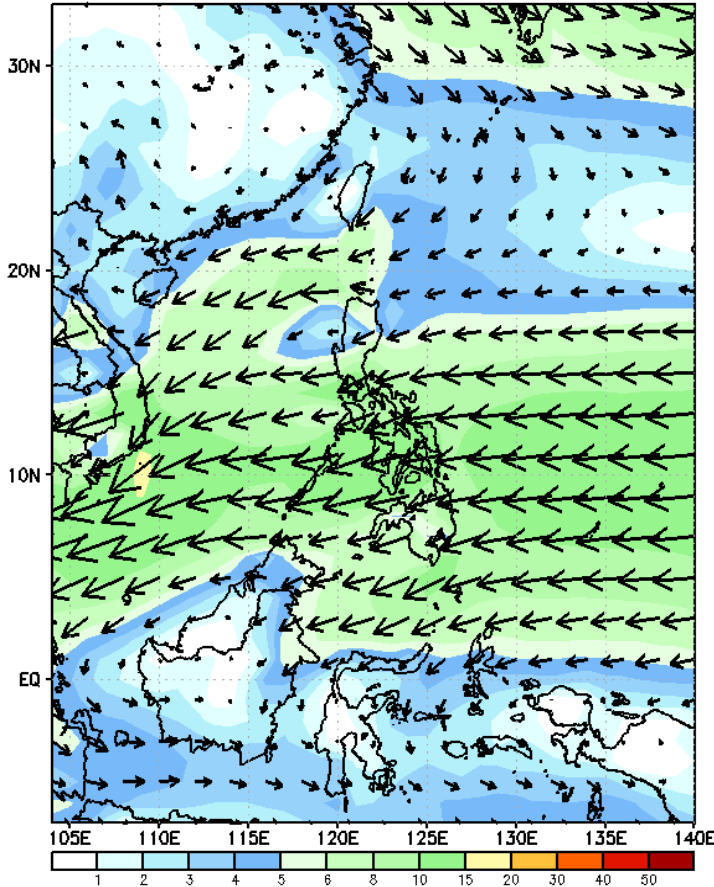
Probability to Exceed 200mm

- Moderate to high over most of Bicol Region, Aklan, Capiz, and Samar Provinces;
- Low to moderate over the rest of Southern Luzon, Dinagat Island, and the rest of Visayas;
- Low over the rest of the country..

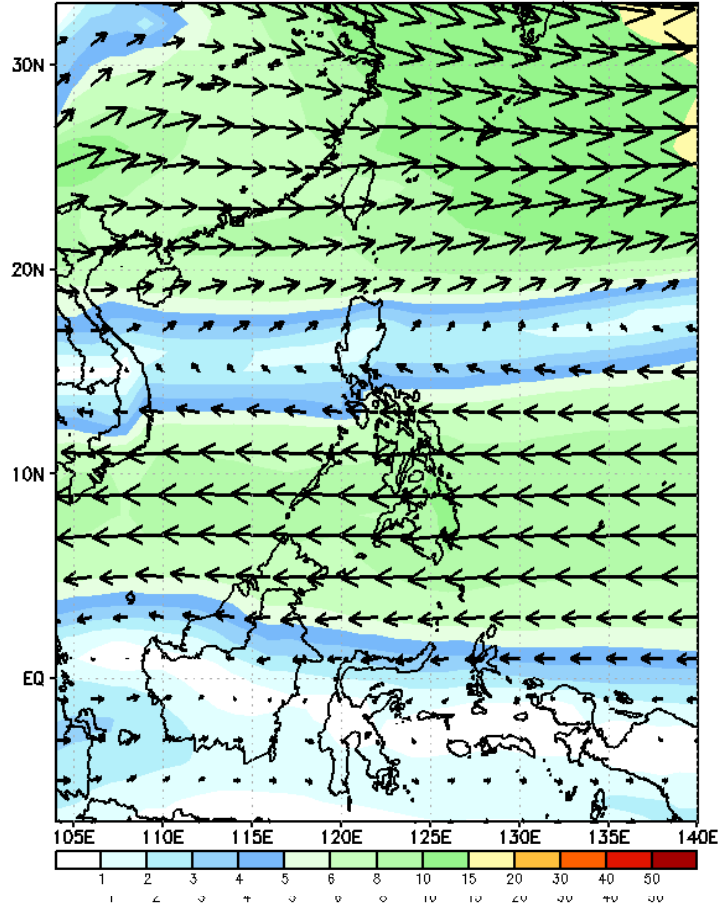
GEFS Week-2 Wind Forecasts:

Week 2: Jan 15-21, 2024

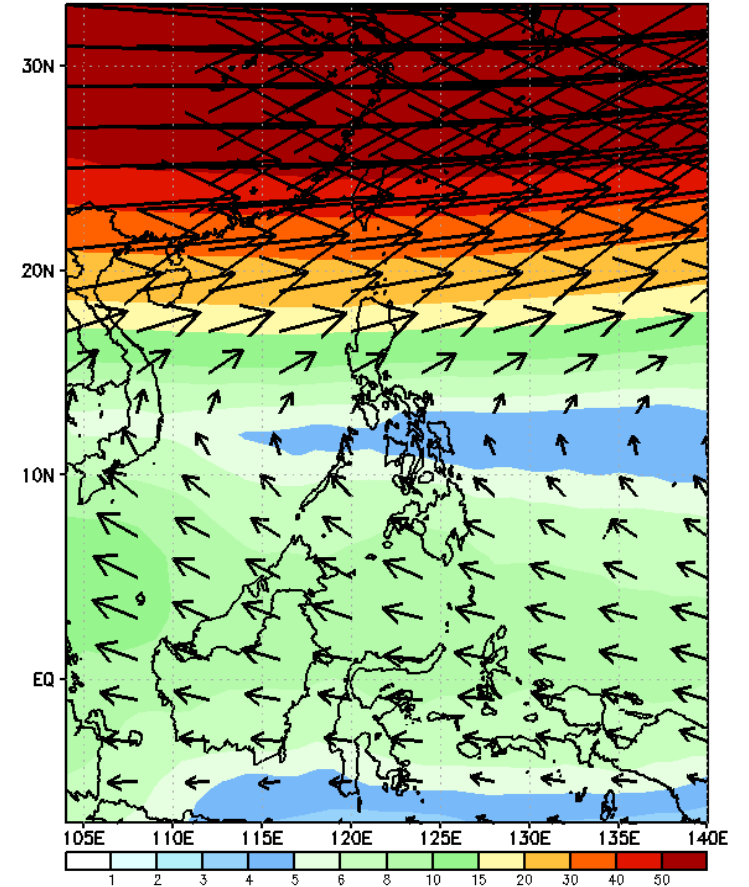
GEFS Week-2 850-hPa Wind Total
Valid: 20250115 - 20250121



GEFS Week-2 700-hPa Wind Total
Valid: 20250115 - 20250121

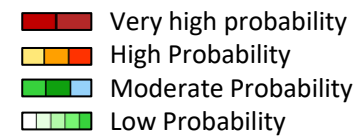


GEFS Week-2 200-hPa Wind Total
Valid: 20250115 - 20250121



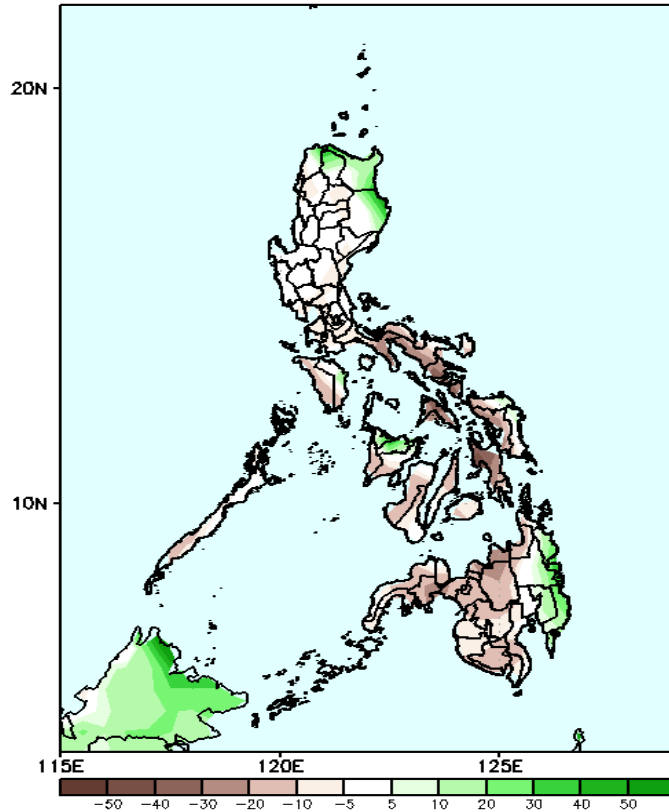
Northeast Monsoon will likely affect Extreme Northern Luzon while Easterlies will likely affect the rest of the country during the forecast period

Precipitation Anomaly and Exceedance Probability > 25/50 mm



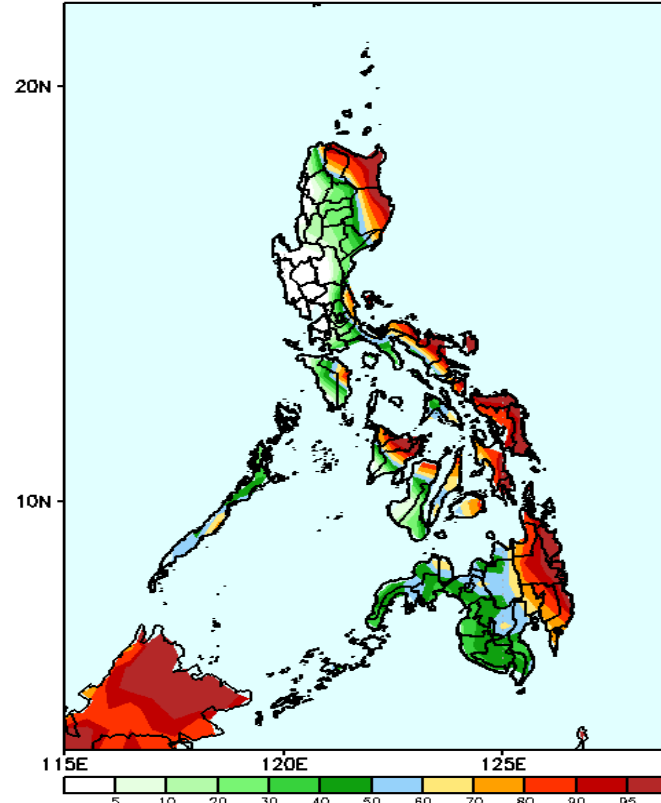
Week 2: Jan 15-21, 2024

GEFS Week-2 Precip Anomaly
Valid: 20250115 - 20250121



Rainfall deficit of 20-80mm is expected in most parts of the country except in Batanes, parts of Ilocos Norte, Apayao, Cagayan, Isabela, Aklan, Capiz, Surigao del Sur, Davao de Oro and Davao Oriental where 20-60mm increase of rainfall is expected.

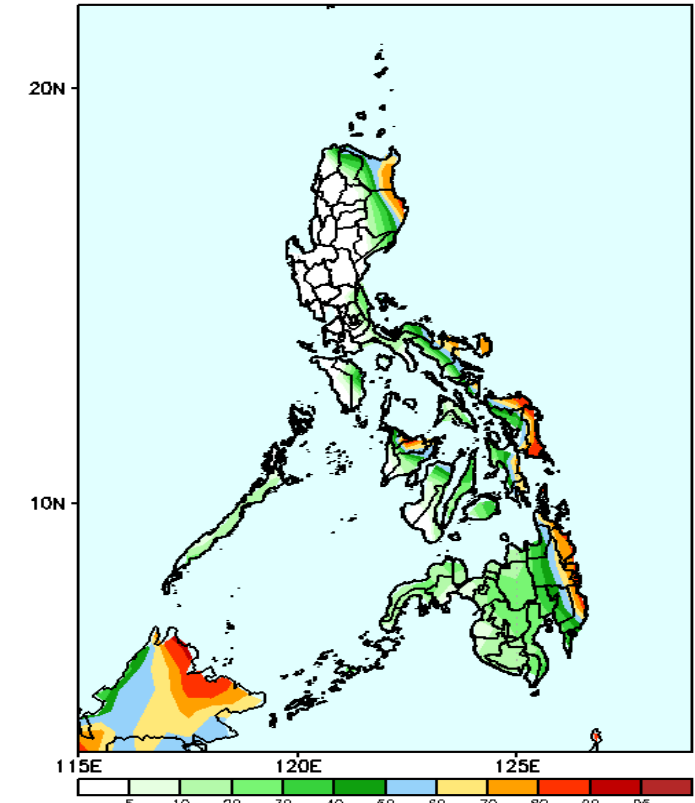
GEFS Week-2 Exceedance Prob. > 25mm
Valid: 20250115 - 20250121



Probability to Exceed 25mm

- High to very high over Batanes, eastern part of Cagayan and Isabela, northern part of Bicol Region, Eastern Visayas and Eastern Mindanao;
- Moderate to high over Apayao, Quezon, the rest of Southern Luzon, most of Panay Island, northern part of Negros Occidental, Central Visayas and the rest of Mindanao;
- Low to Moderate over the rest of Luzon

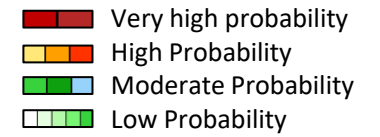
GEFS Week-2 Exceedance Prob. > 50mm
Valid: 20250115 - 20250121



Probability to Exceed 50mm

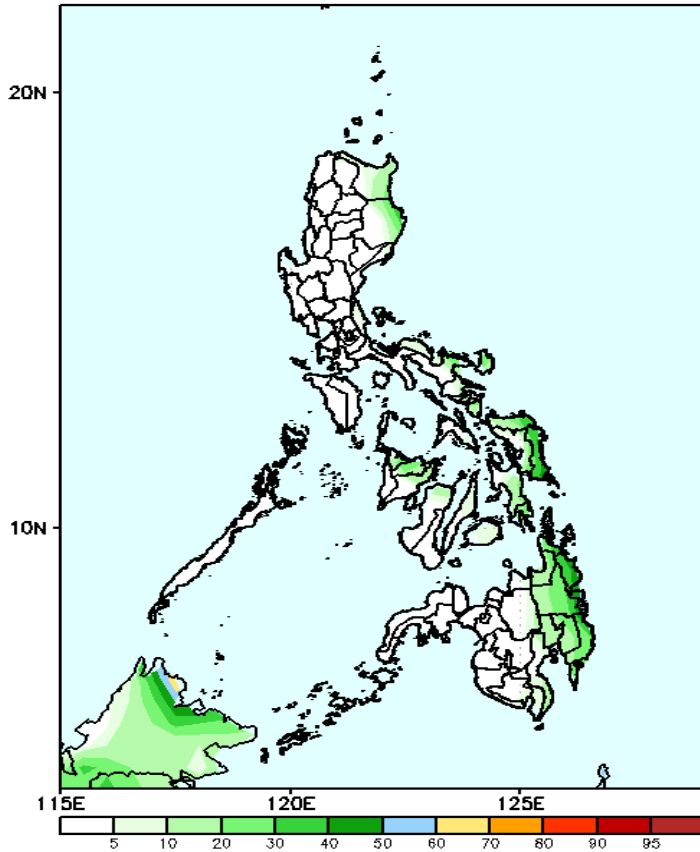
- Moderate to high over Batanes, the eastern part of Cagayan and Isabela, Aklan, Capiz, and the easternmost of Bicol Region, Eastern Visayas, and Mindanao;
- Low to moderate over the rest of eastern and Southern Luzon, and the rest of Visayas and Mindanao;
- Low over the rest of Luzon.

Exceedance Probability > 100/150/200 mm



Week 2: Jan 15-21, 2024

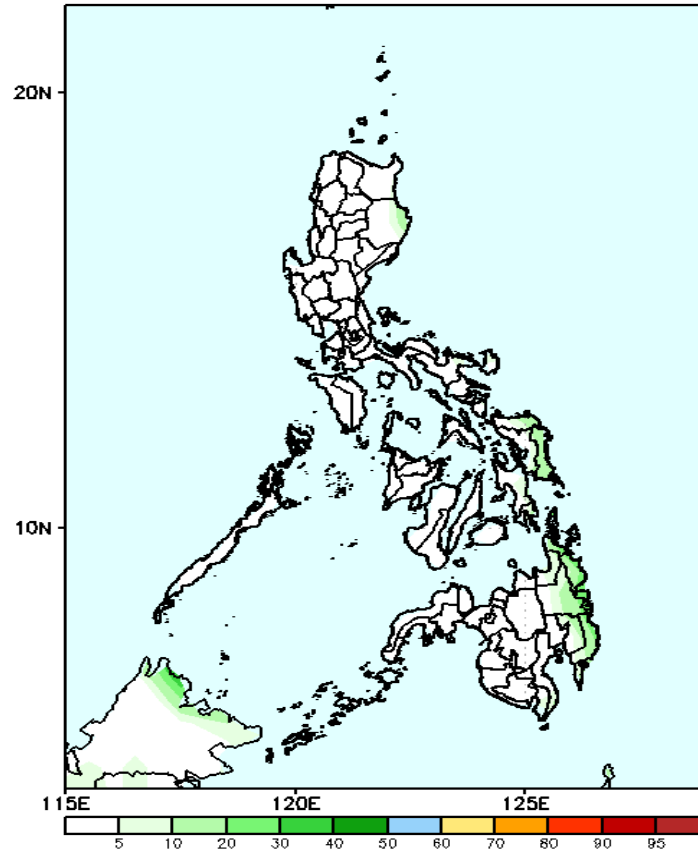
GEFS Week-2 Exceedance Prob. > 100mm
Valid: 20250115 - 20250121



Probability to Exceed 100mm

- Low to moderate over the Bicol Region, Eastern Visayas, and the eastern part of Mindanao;
- Low over the rest of the country.

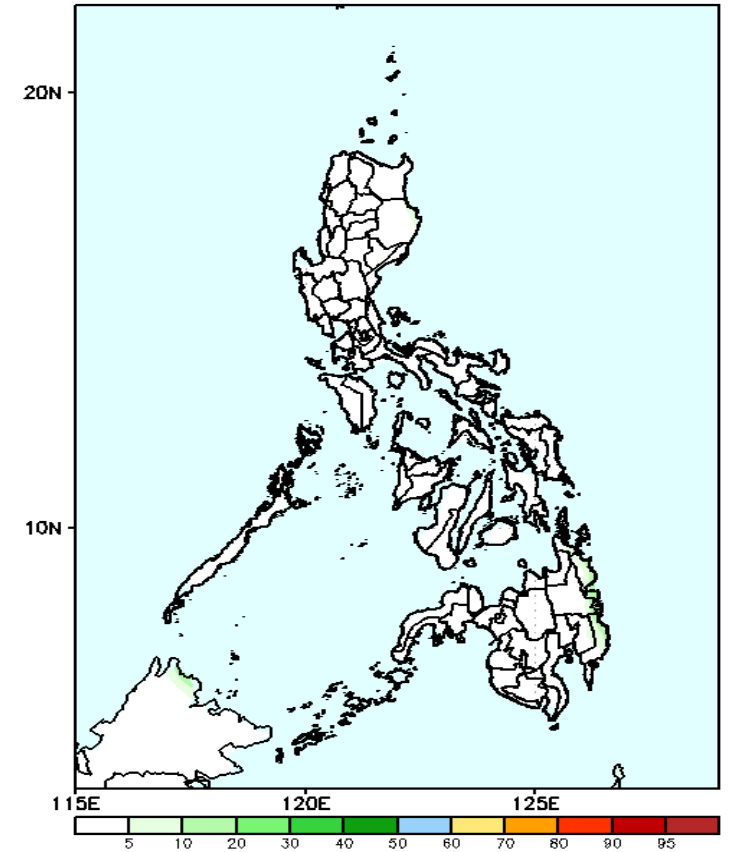
GEFS Week-2 Exceedance Prob. > 150mm
Valid: 20250115 - 20250121



Probability to Exceed 150mm

- Low across the country.

GEFS Week-2 Exceedance Prob. > 200mm
Valid: 20250115 - 20250121

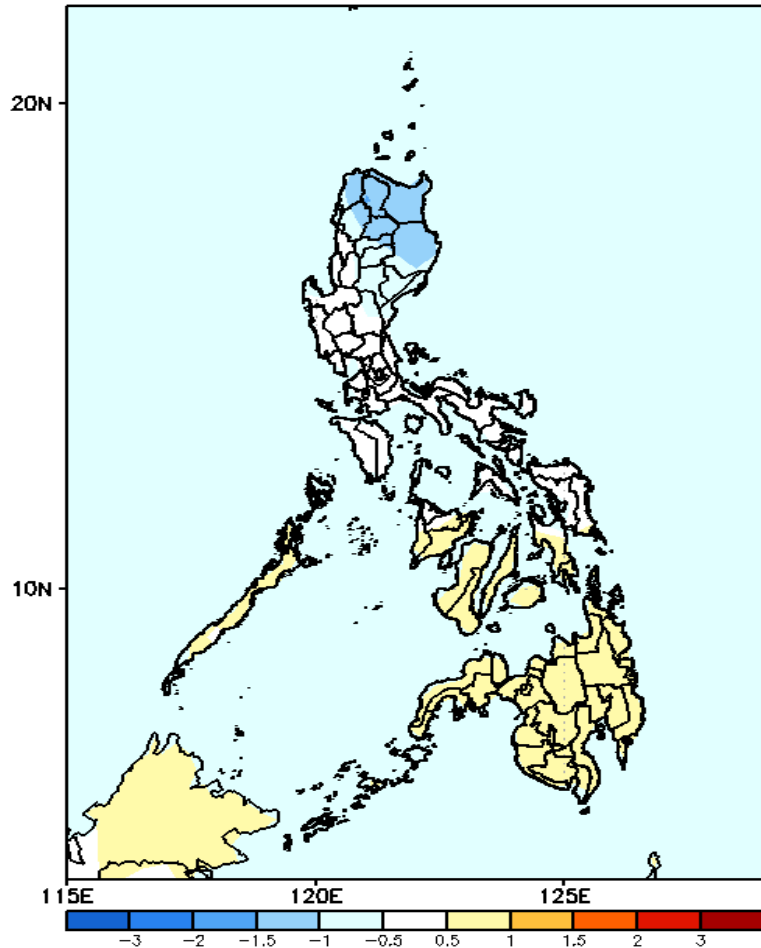


Probability to Exceed 200mm

- Low across the country.

GEFS Week-1 & 2 Forecasts: T2m Anomaly

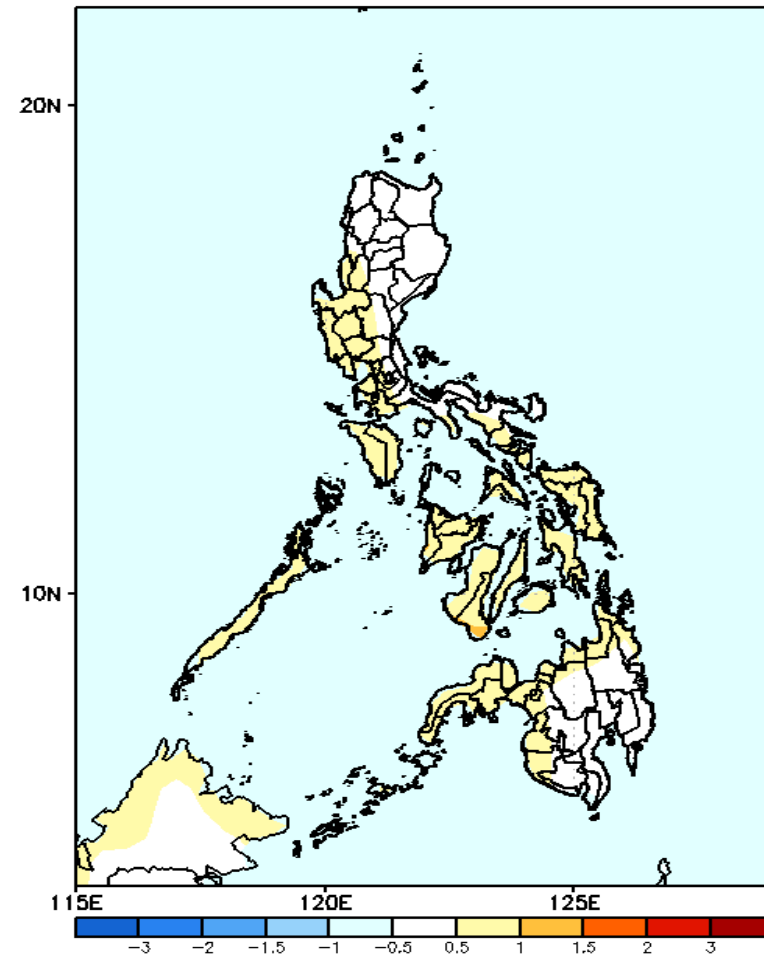
GEFS Week-1 T2m Anomaly
Valid: 20250108 – 20250114



2m Temperature Week 1: Jan 08-14, 2024

Near to cooler than average surface air temperature will likely be experienced in most parts of the Northern Luzon while Visayas and Mindanao will likely experience slightly warmer than average surface air temperature.

GEFS Week-2 T2m Anomaly
Valid: 20250115 – 20250121



2m Temperature Week 2: Jan 15-21, 2024

Near to slightly warmer than average surface air temperature will likely be experienced in in most parts of the country.